

TURNKEY INSTALLATION SERVICES



THE MISSION

At Mitsubishi Electric, our mission is to be a key contributor in your business as you strive to transmit reliable power across the grid in the most efficient manner possible. With that in mind, we are strategically aligning our business to ensure we continue to provide the best value to our customers and deliver the most reliable products and services.

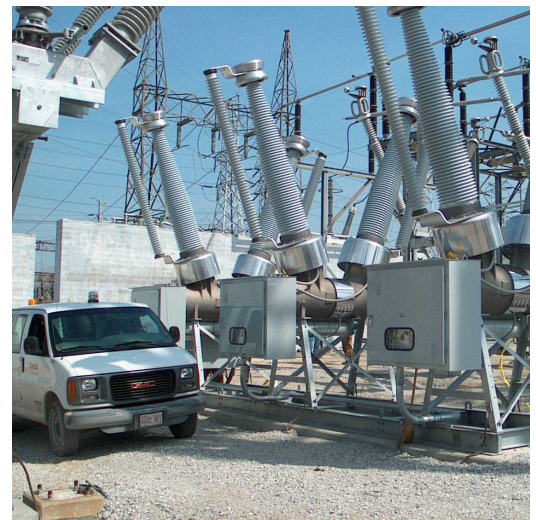
We are proud to introduce our Turnkey Installation Service offerings to our High Voltage Breaker utility customers. Our Turnkey Services program enables you to partner with an industry leader in breaker installation and testing support.

With a staff of on call service professionals that know your equipment, we're ready to help when help is needed. Our factory trained and NETA certified technicians are able to respond quickly and get your critical power equipment back online safely and efficiently.

Working with MEPEI and EPS gives you access to a team of experienced industry experts. We provide a total service solution with a single point of contact for coordination and scheduling. Whether you are performing regular maintenance, emergency outage, or expanding your facility, we've got you covered.

DISCOVER THE BENEFITS

- ◆ Factory trained and certified technicians
- ◆ Breaker offloading and assembly
- ◆ Testing services
- ◆ Existing equipment removal
- ◆ Written reports for units serviced
- ◆ Customized turnkey installation solutions
- ◆ Extended warranty options
- ◆ Substation maintenance packages





**MITSUBISHI ELECTRIC
POWER PRODUCTS, INC.**

ELECTRIC POWER SYSTEMS

TESTING & ENGINEERING SERVICES

INSTALLATION SERVICES COVERAGE MAP



MEPPI continues to expand our service offerings. If you are interested in Installation Services for High-Voltage Breakers, please contact us to discuss your specific needs.

CONTACT DETAILS:

For more information more about MEPPI's Turnkey Installation Services, please contact Jason George today.

Jason George

Manager, Customer Response

High Voltage Switchgear Division

P: (724) 772-2117 M: (412) 605-2252

Jason.george@meppi.com

MITSUBISHI ELECTRIC POWER PRODUCTS, INC.

Corporate Headquarters
Thorn Hill Industrial Park
530 Keystone Drive
Warrendale, PA 15086

www.meppi.com | 724.772.2555
© 2020 Mitsubishi Electric Power Products, Inc.
All Rights Reserved. Printed in USA
Publication No. SA0020900002 | May 2021

